

# OLIS Projects



Illustration by Danielle Martin

OLIS students in the 2014 Real Estate Development Challenge course created proposals that exemplified the best in sustainability planning and ecological design at the Willamette Falls Legacy Project site in Oregon City.

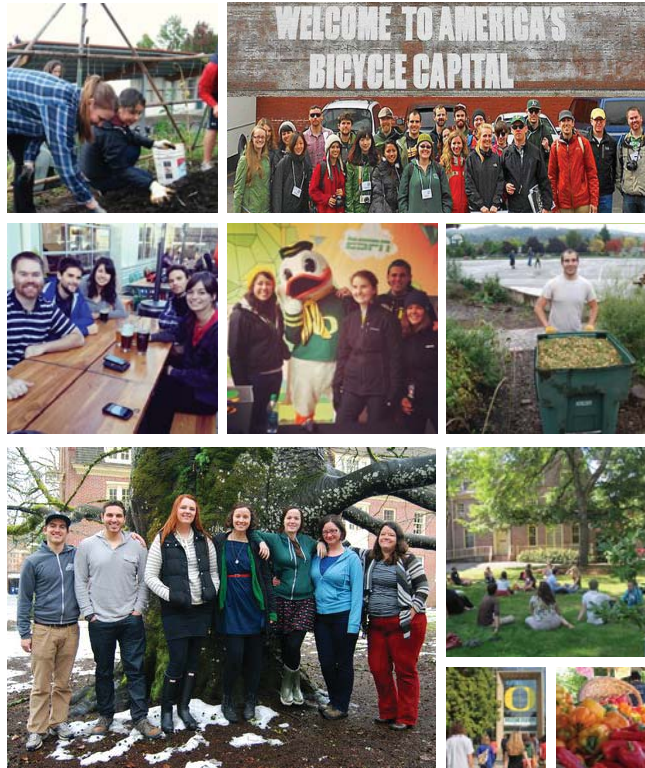


University of Oregon's 13th Avenue has not been used as a street for years, yet its design still reflects its former use. This OLIS Sustainable Transportation project explored how the street can be redesigned for its current purposes.

# Application Deadlines

**FEB 1**  
PRIORITY DEADLINE

The OLIS Program accepts applications on a rolling basis between November and June each year. Students begin the program as a cohort in the fall quarter.



## Contact

Oregon Leadership in Sustainability Program  
11 Susan Campbell Hall  
1209 University of Oregon  
Eugene, OR 97403

T 541.346.8227  
olis@uoregon.edu

<http://olis.uoregon.edu>

**O** UNIVERSITY OF OREGON  
School of Architecture and Allied Arts

Equity  
Energy Efficiency  
Clean Energy  
Waste Reduction  
Land Use  
Community Health  
Green Building  
Water  
Transportation

**OLIS**  
Oregon Leadership  
in Sustainability  
Graduate Certificate Program

## What is OLIS?

Oregon Leadership in Sustainability is an interdisciplinary graduate certificate program at the University of Oregon that offers students a dynamic, practical course of study in urban sustainability issues related to planning, policy and design.

OLIS provides skills and hands-on experience to prepare its graduates for a professional work environment, engaged in sustainability efforts in public agencies, nonprofit organizations and the private sector.

Coursework in varied disciplines inspires our students to look beyond traditional barriers between professions to create robust, integrated solutions to complex challenges.

OLIS drills down to the core issues affecting sustainability in cities: land use and transportation, energy and climate change, public health and food, water and waste, local jobs and prosperity, social justice and access to services and decision-making.

Central to the OLIS philosophy is an understanding that leadership is best nurtured in



a community. OLIS students come from diverse backgrounds, offer broad perspectives and share a passion for sustainability.

Student collaboration within the cohort enriches the year-long learning experience. Our students work together on applied projects for local clients in order to grasp the theory, implementation and outcomes of sustainable solutions.

Sustainability is fundamental to decisions made on local and global scales. At OLIS we embrace this reality, fostering the ethic of sustainability our students integrate into their personal and professional lives.

OLIS offers academic rigor and professional and personal development to inspire students' work, prepare them to transform their communities and facilitate a shift toward a more sustainable future.

Kelly Groth, OLIS '14

*After graduating from OLIS, I returned to my native Bay Area and landed a job with NextGen Climate Action, a Super PAC dedicated to preventing climate disaster. My position with NextGen combines my experience in coordinating local campaigns in San Francisco with my passion for environmental sustainability and political activism.*

*I was also appointed to the Citizens' Advisory Committee of the San Francisco Public Utilities Commission. With the education and hands-on experience I gained at OLIS in energy and climate change, and city wastewater, power and water systems, I'm able to promote change, represent my community and further my education in sustainability!*



UNDERGRAD  
Philosophy

## Program Curriculum

### Fall Quarter

Sustainability Plans and Indicators  
Sustainable Transportation  
Sustainability Leadership Workshop 1  
Elective

### Winter Quarter

Energy and Climate Change  
Natural Hazard Mitigation  
Professional Writing 1  
Sustainability Leadership Workshop 2  
Elective

### Spring Quarter

Real Estate Development Challenge  
Professional Writing 2  
Sustainability Leadership Workshop 3  
Elective

### Summer Quarter (optional)

Study Abroad Programs offered through OLIS and other academic departments at the University of Oregon may be used to fulfill elective requirements.

### Popular Electives

Urban Revitalization  
Landscape Perception  
Sustainable Business  
Industrial Ecology  
Society & Climate Change  
Grant Proposal Writing  
Urban Farm  
Climate Change Design  
Water & The Built Environment